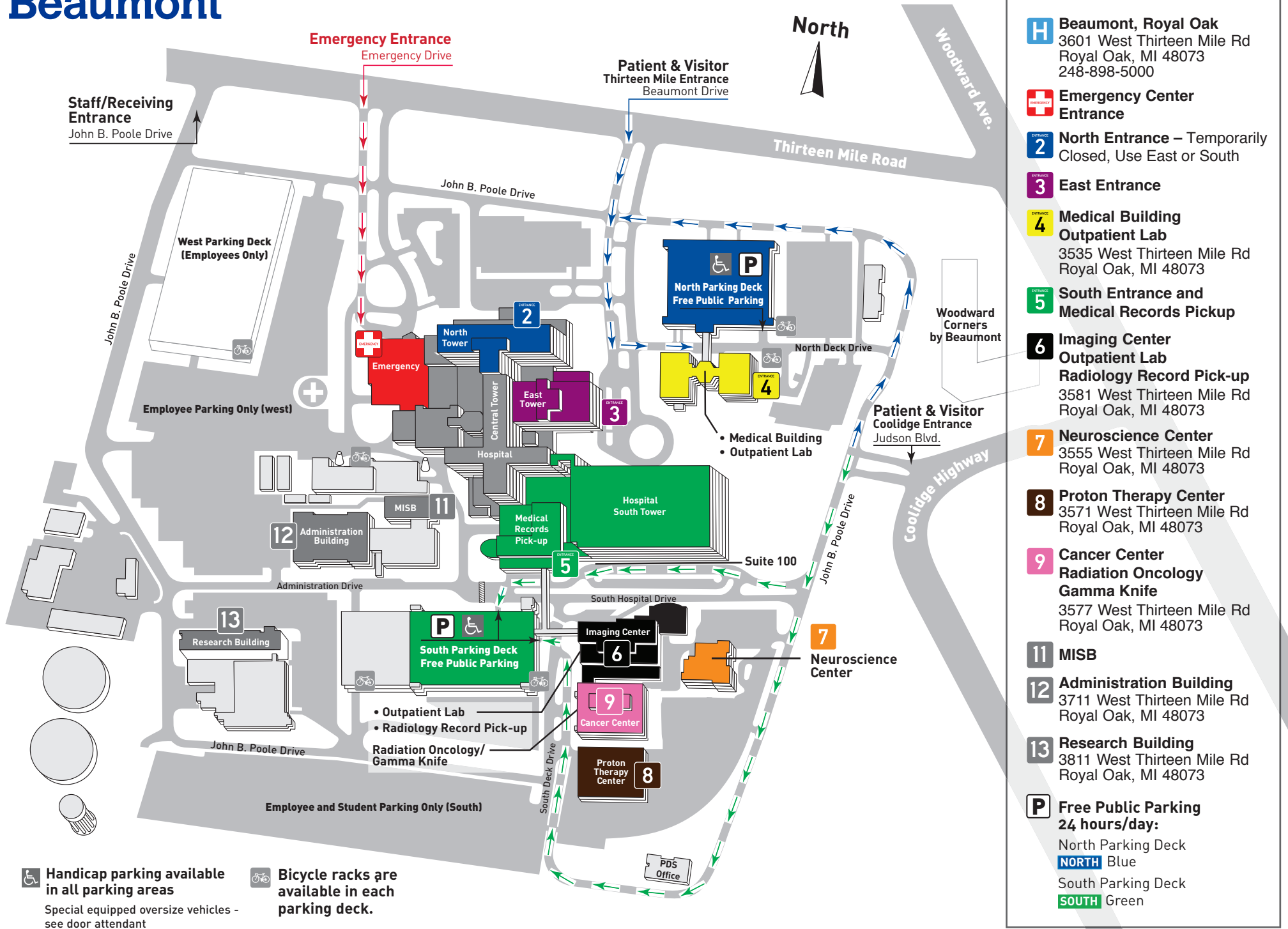


# Beaumont



**Beaumont Hospital, Royal Oak**  
**Patient and Visitor Parking Information**  
**(Information subject to change)**

**Hospital Parking**

Free parking is available in the North (blue) Parking Deck and South (green) Parking Deck.

**Valet Parking**

Valet parking can be accessed at the North, South, East and the Cancer Center entrances for a fee.

***The valet parking hours of service are:***

**East Entrance -**

Monday through Friday – 5 a.m. to 8 p.m.

Weekends and holidays – Closed

**South Entrance -**

Monday through Friday – 5 a.m. to 8 p.m.

Weekends and holidays – Closed

**Cancer Center -**

Monday through Friday – 7:30 a.m. to 4 p.m.

Weekends and holidays – Closed

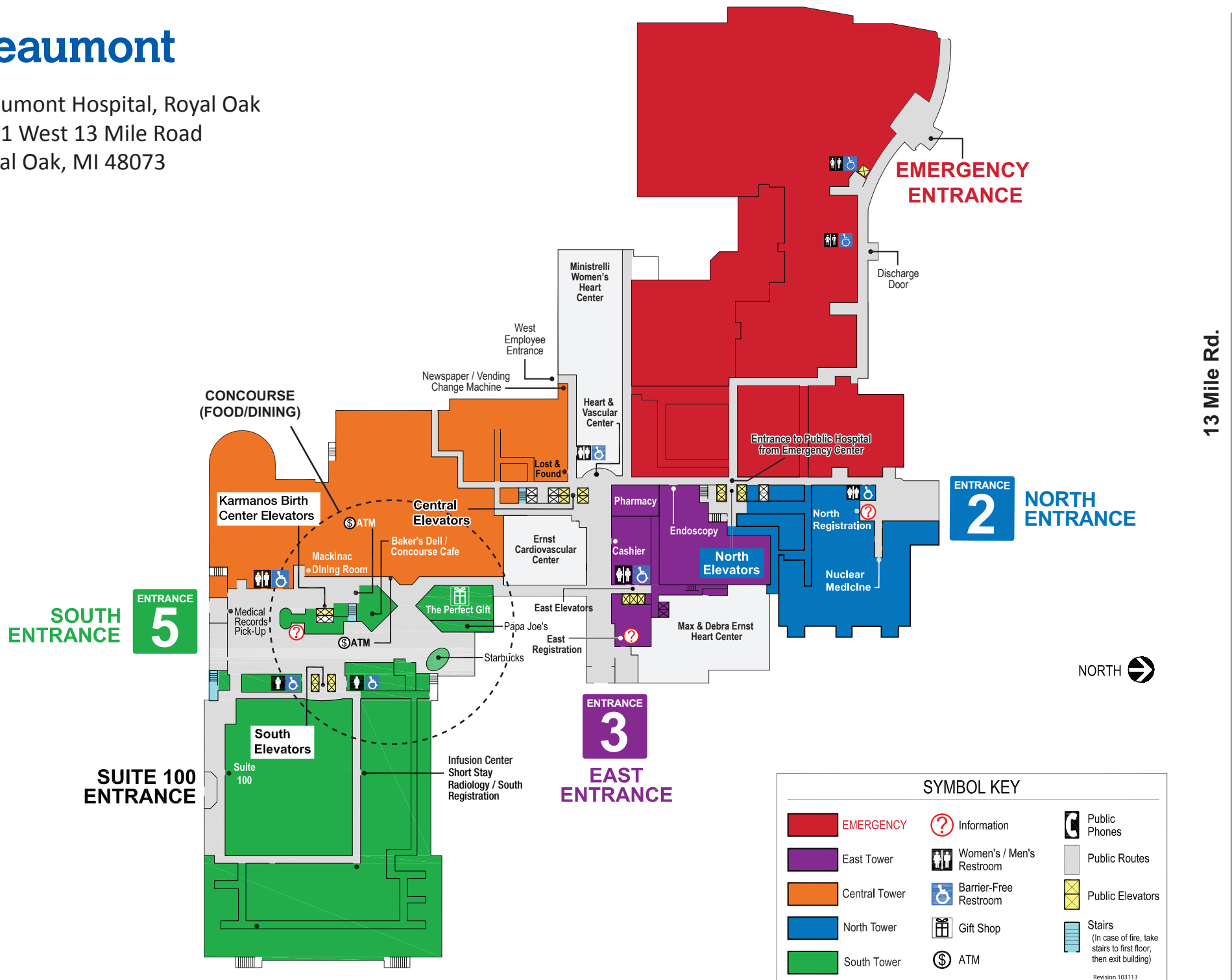
***All cars left in valet parking after closing can be retrieved by calling Security – 248-898-0911 or ext. 80911 using a Beaumont phone.***

**Day of discharge parking**

Please speak to the patient's nurse on the day of discharge or refer to the discharge brochure in the patient's room to determine which entrance to use. Drive to that entrance and speak with the attendant, who will direct you either to the valet or free parking area.

# Beaumont

Beaumont Hospital, Royal Oak  
3601 West 13 Mile Road  
Royal Oak, MI 48073



13 Mile Rd.



## Dining

Whether you're looking for a quick bite to eat, a cup of coffee or someplace to relax and enjoy a full meal, Beaumont has several dining options:

### **Mackinac Dining Room – South Tower First Floor**

Enjoy healthy, appetizing meals in the Mackinac Dining Room. In addition to bagels, soups, sandwiches, baked goods and more, you'll find daily specials, vegetarian selections and a fresh salad bar every day.

### **The Baker's Deli – South Tower Concourse**

Stop by for freshly made soups, sandwiches, salads and baked goods at the Baker's Deli. For your convenience, you can pick up a gallon of milk or a loaf of bread before you head home, or select a delectable gourmet dessert to take home to your family.

### **The Concourse Café –**

With a rotating menu featuring international cuisine, there's always something new at the Concourse Café with main entrees, side dishes and vegetarian selections.

### **Starbucks –**

If you need a little pick-me-up, visit Starbucks at the far north end of the South Tower Concourse. Beaumont's full-service Starbucks features all of your favorite coffee creations as well as a selection of baked goods and coffee beans to take home with you.

**Papa Joe's Market** – Features a variety of fresh fruit, homemade soups and fresh baked goods. It includes fresh Mediterranean foods as well as sushi made to order. Come and visit our gourmet food case that changes daily.



### **The Coffee Shop – Temporarily Closed Medical Office Building, First Floor**

If you're looking for a quick bite to eat or a cup of coffee to get you going, stop by The Coffee Shop on the first floor of the Medical Office Building. There you'll find a selection of sandwiches, soups and snacks as well as coffee and other beverages.

---

## **Current Hours of Operation:**

### **Mackinac Dining:**

Monday - Friday 6 a.m. until 11 p.m.  
Saturday & Sunday - 6 a.m. until 7 p.m.

### **Bakers Deli:**

Monday - Friday 7 a.m. until 3:30 p.m.  
Saturday & Sunday CLOSED

### **Concourse Cafe:**

Monday - Friday 7 a.m. until 2:15 p.m.

### **Starbucks:**

Monday - Friday 5:30 a.m. until 6 p.m.  
Saturday - Sunday 6:00 a.m. until 2 p.m.

### **Papa Joes:**

Monday - Friday 9 a.m. - 5:30 p.m.  
Saturday & Sunday 9 a.m. until 3 p.m.

## Shopping



Looking for a card, a gift or flowers for someone special?

Walk through the South Tower Concourse and enjoy a wide variety of shopping opportunities.

**The Perfect Gift** – Features everything from books, magazines, flowers and cards to gift items, jewelry and more.

Hours are:

Monday through Friday 7:00 a.m. to 7:00 p.m.  
Saturday from 11:00 a.m. to 4:00 p.m.  
Sundays & Holidays – Closed

## *Looking for a place to relax?*



### **Temporarily Closed**

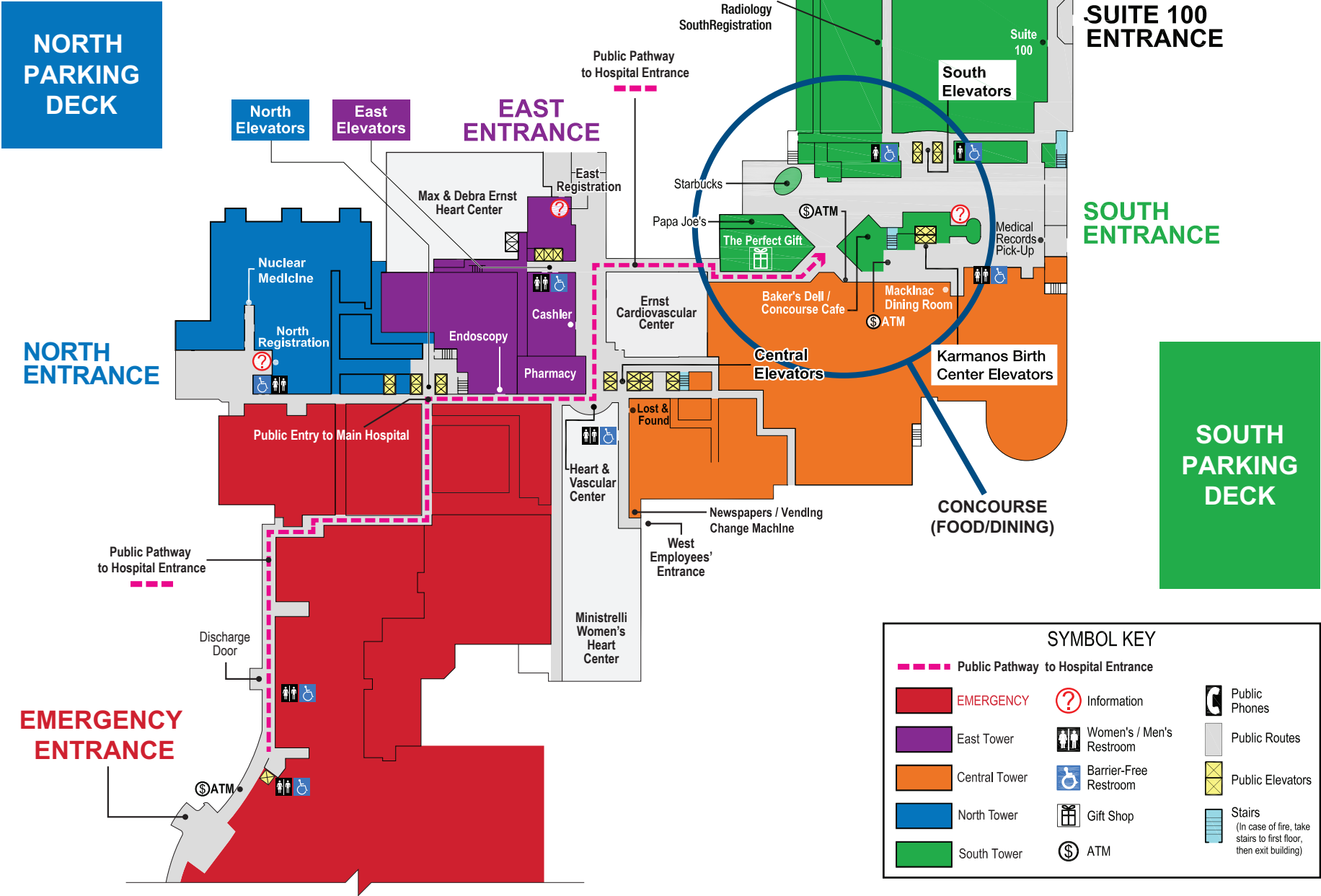
Enjoy the tranquility and beauty of the **Debra Saber Salisbury Memorial Garden on 6 South.**

The indoor garden is lit by natural sunlight from the atrium during the day; in the evening, artificial lighting replicates moonlight. You can access the Memorial Garden by taking the South Public Elevators (brass-colored elevators) to 6 South. The Memorial Garden is open from 8:00 a.m. to 8:00 p.m.

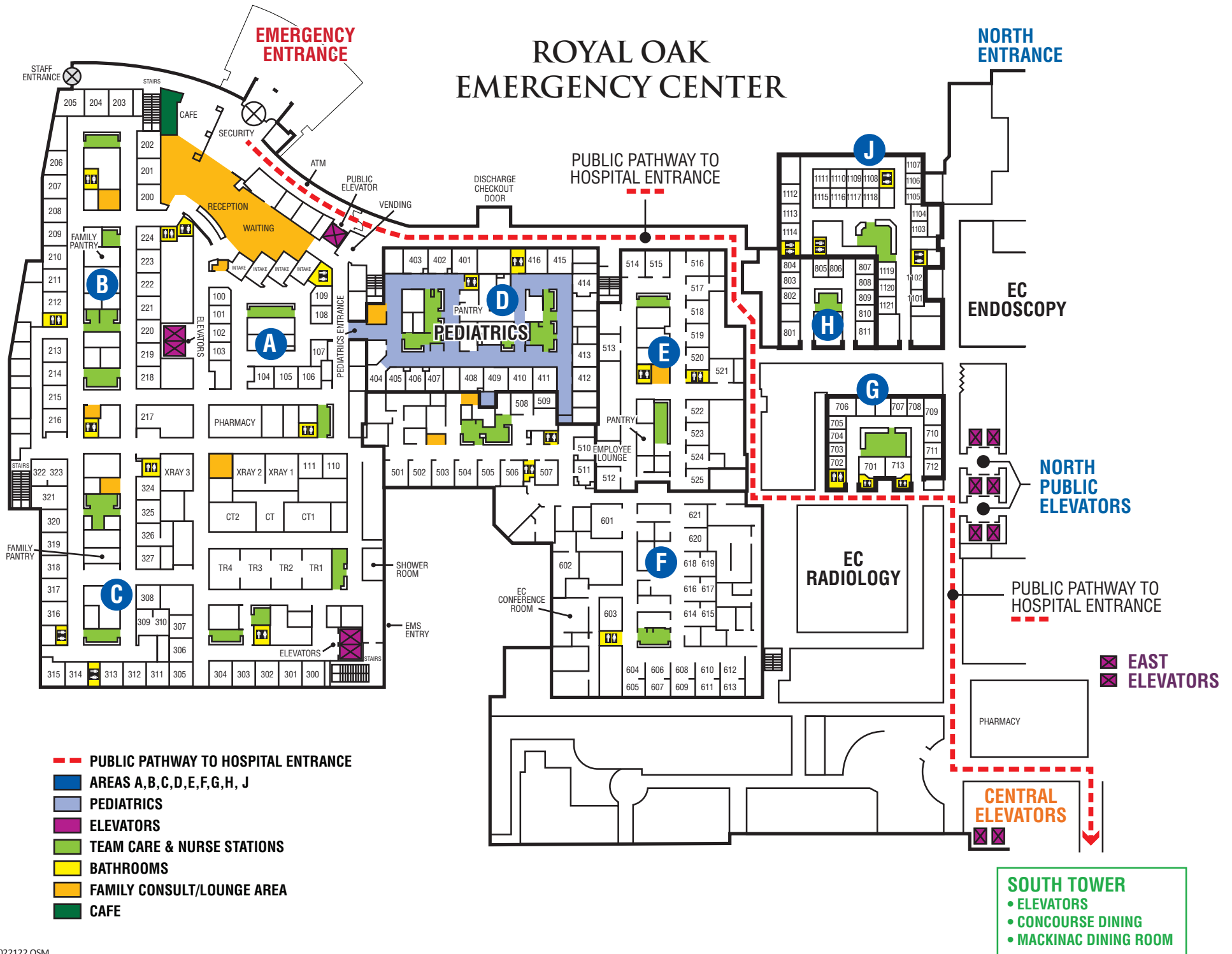
# Beaumont

Beaumont Hospital, Royal Oak  
3601 West 13 Mile Road  
Royal Oak, MI 48073

13 Mile Rd.



# ROYAL OAK EMERGENCY CENTER



# Beaumont

## CHILDREN'S

**Emergency Entrance**  
Emergency Drive

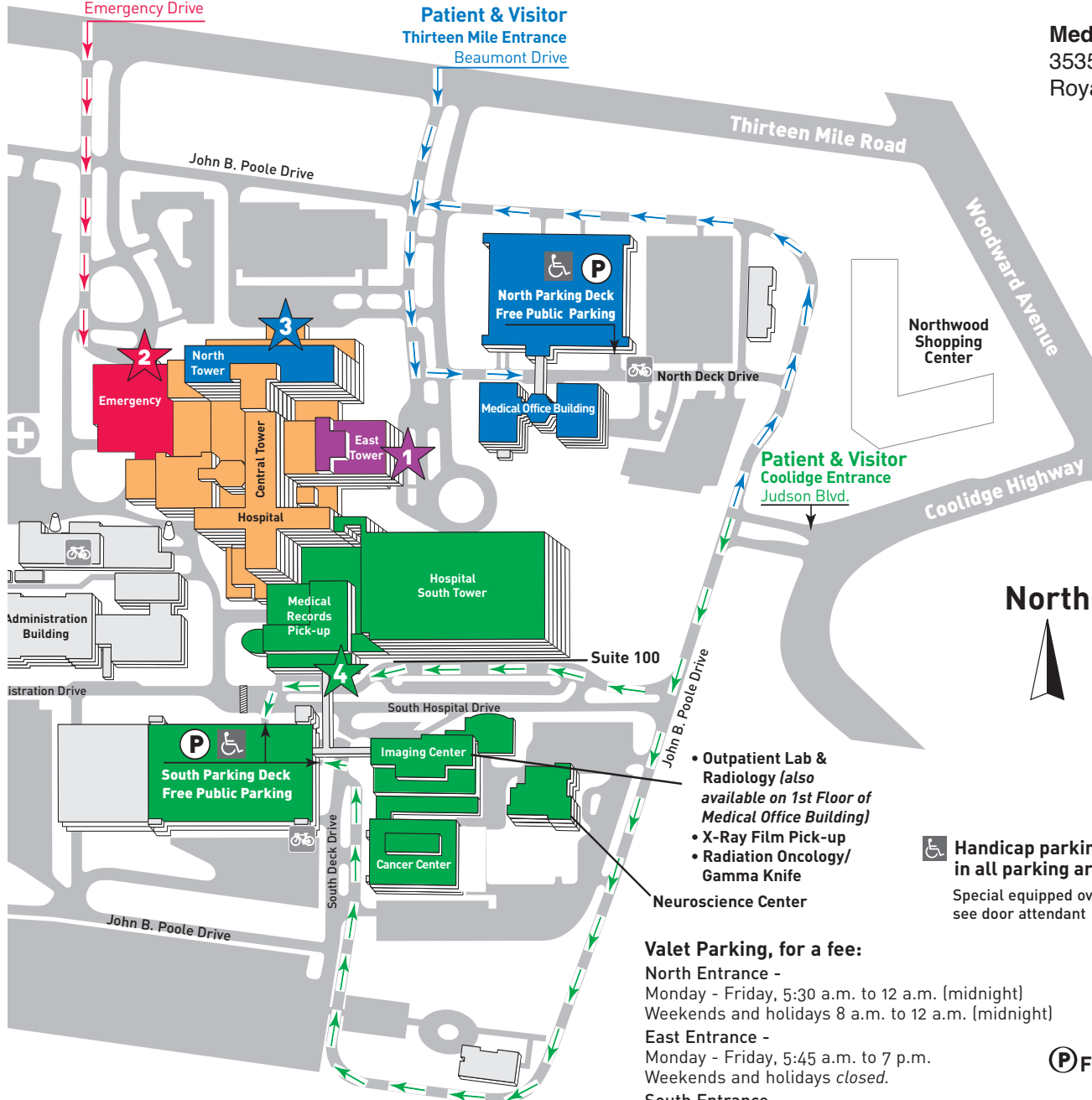
**Patient & Visitor**  
**Thirteen Mile Entrance**  
Beaumont Drive

**Beaumont Hospital, Royal Oak**  
3601 W. Thirteen Mile Road  
Royal Oak, MI 48073-9769  
248-898-5000

**Imaging Center**  
3581 W. Thirteen Mile Road  
Royal Oak, MI 48073-9769

**Medical Office Building**  
3535 W. Thirteen Mile Road  
Royal Oak, MI 48073-6769

**Cancer Center**  
3577 W. Thirteen Mile Road  
Royal Oak, MI 48073-9769



### Cancer Center

Pediatric Hematology/Oncology Clinic

### Central Tower

Ghesquiere Family Center for Children's Surgery

### North Tower

Emergency Center

### South Tower

General Pediatrics Unit  
Pediatric Intensive Care Unit  
Neonatal Intensive Care Unit  
Pediatric Procedure Suite  
Pediatric Radiology

### Medical Office Building

General Pediatric Outpatient Clinic  
Pediatric After Hours Clinic  
Pediatric Surgery Clinic  
Pediatric Subspecialty Clinics  
Pediatric Neurology  
Pediatric Lab/Blood Draw

North



- ★ East Entrance
- ★ Emergency Center Entrance
- ★ North Entrance
- ★ South Entrance and Medical Records Pick-up



**Handicap parking available in all parking areas.**

Special equipped oversize vehicles - see door attendant

### Valet Parking, for a fee:

**North Entrance -**  
Monday - Friday, 5:30 a.m. to 12 a.m. (midnight)  
Weekends and holidays 8 a.m. to 12 a.m. (midnight)

**East Entrance -**  
Monday - Friday, 5:45 a.m. to 7 p.m.  
Weekends and holidays closed.

**South Entrance -**  
Monday - Friday, 5:30 a.m. to 11 p.m.  
Weekends and holidays 8 a.m. to 11 p.m.

**Emergency Entrance -**  
10:00 a.m. to 12 a.m. (midnight) daily

### Free Public Parking 24 hours/day:

North Parking Deck **NORTH** Blue

South Parking Deck **SOUTH** Green



**Bicycle racks are available in each parking deck.**

**Beaumont is a smoke-free campus**





## Beaumont Children's Hospital Locations

### Beaumont Troy Hospital

44201 Dequindre Road  
Troy, MI 48085-1198  
248-964-5000

- ▶ General Unit
- ▶ After Hours Clinic
- ▶ Emergency Center

### Beaumont Grosse Pointe

468 Cadieux Road  
Grosse Pointe, MI 48230  
313-343-1000

- ▶ General Pediatrics Unit

### Berkley Medical Center

1695 West 12 Mile Road  
Berkley, MI 48072  
248-691-4744

- ▶ Center for Human Development

### Beaumont Health Center

4949 Coolidge Hwy.  
Royal Oak, MI 48073-6769  
248-655-5695

- ▶ Pediatric Speech Pathology
- ▶ Pediatric Rehabilitation

### Beaumont West Bloomfield

6900 Orchard Lake Road, Ste. 114  
West Bloomfield, MI 48322  
248-855-7435

- ▶ Pediatric Speech Pathology
- ▶ Pediatric Rehabilitation

### Medical Village

31815 Southfield, Ste. 22  
Beverly Hills, MI 48024  
248-594-3142

- ▶ Adolescent Medicine Center

### NorthPointe Building

1949 West 12 Mile Road LL  
Berkley, MI 48072  
248-547-4276

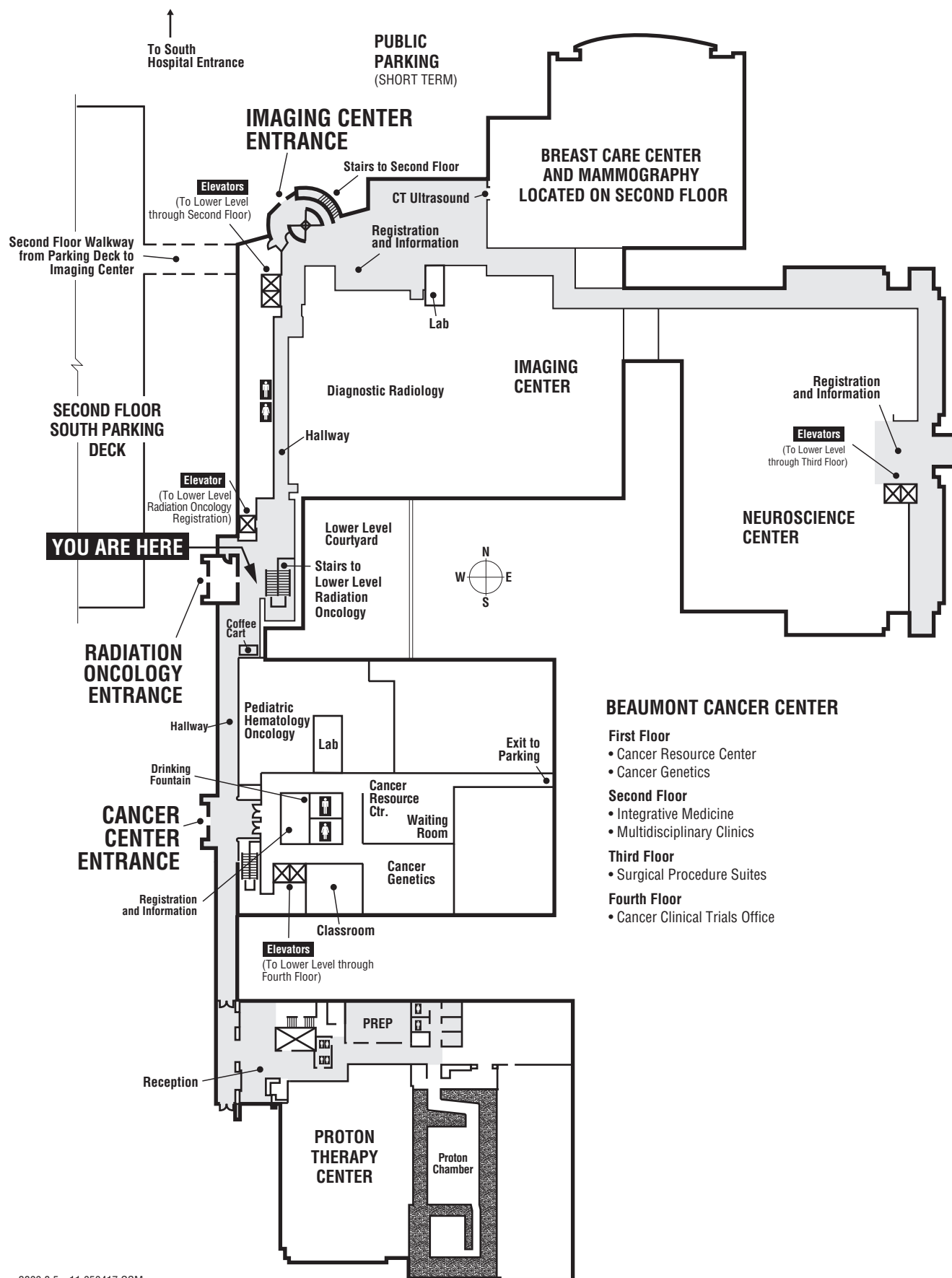
- ▶ Sleep Center



# Beaumont

## CANCER, IMAGING, NEUROSCIENCE AND PROTON CENTERS

ROYAL OAK



### BEAUMONT CANCER CENTER

#### First Floor

- Cancer Resource Center
- Cancer Genetics

#### Second Floor

- Integrative Medicine
- Multidisciplinary Clinics

#### Third Floor

- Surgical Procedure Suites

#### Fourth Floor

- Cancer Clinical Trials Office